

Fairfield 70

70 Series Fusion-Welded Vinyl Windows



*Beautiful, strong and environmentally friendly –
windows for the way you live.*

Alside®

Comfort and Style for Every Season

It's amazing what windows can do.

Performance-engineered windows protect us from intense heat, frigid cold and a wide range of challenging weather elements, yet allow us to enjoy the warmth and beauty of natural light from the comfort of our home. Fairfield 70 Series Windows deliver all of this and more, including year-round energy savings and classic beauty that's virtually maintenance-free.



1. **Premium vinyl mainframe and sashes** are colored throughout – won't chip, peel, crack or warp and never need to be painted.
2. **Multi-chambered mainframe and sash construction** creates effective insulating spaces for thermal efficiency.
3. **3/4" thick insulated glass unit** with optimal air space improves thermal performance.
4. **Intercept® Warm-Edge Spacer System** helps block the transfer of heat and cold for reduced energy use.
5. **Interlock at sash locking rail** increases strength and reduces air infiltration.
6. **Metal reinforcement at the locking rail** increases rigidity and strength.
7. **Fully extruded lift rail** provides easy and convenient operation of the sash.
8. **Drop-in glazing** for added energy efficiency and interior aesthetic appeal.
9. **Full-capture sill** enhances protection from air and water infiltration.
10. **Hidden screen track** for added beauty.
11. **Nailing fin welded at all corners** for weathertight installations.

Plus these additional features:

- Fusion-welded frame and sashes for increased strength and structural integrity.
- 2 5/8" frame depth for multiple applications.
- Sash operates on two concealed, pre-calibrated block and tackle sash balances.
- Double-pile weatherstripping at the locking rail for added thermal protection.
- Side-load bottom sash makes cleaning convenient from inside the home.
- Water management system with offset drainage to the exterior.
- Indoor/outdoor removable fiberglass screens.



Aside offers a variety of ENERGY STAR® qualified products. Consult your window professional for the optimal glass package required for your home and climate zone.

Fairfield 70 Series Windows come standard with a 1 3/8" nail fin. For ideal installations in a variety of applications, four additional options also are offered: 1 3/8" nail fin with J-channel, 7/8" nail fin, stucco fin and a block frame.



1 3/8" Nail Fin (standard)



1 3/8" Nail Fin with J-Channel



7/8" Nail Fin



Stucco Fin



Block Frame

Conquer Energy Loss With High-Performance Glass

Optimize your windows' insulating power by choosing the best glass system for your home and climate zone.

Most windows are about 80% glass, so you'll want to carefully select your glass system to ensure maximum energy savings. Our ClimaTech® glass package combines multi-layered, low-emissivity (Low-E) glass, argon gas† and the Intercept Warm-Edge Spacer System for increased energy efficiency compared to a standard clear glass unit. Low-E also minimizes damaging UV rays that cause interior furnishings and carpets to fade.



In summer months, Low-E glass filters the sun's rays and reduces heat penetration from solar energy.



In winter months, Low-E glass lets warm solar rays into your home, while preventing indoor heat from escaping.

Thermal barrier spacer systems.

Spacer systems not only enhance the thermal performance of a window by blocking the conduction of heat, they also can improve the window's durability and strength. Fairfield 70 Series offers two spacer options.

The PPG Intercept Warm-Edge Spacer features a unique, one-piece metal alloy, U-channel design that reduces heat loss through the window. It's stronger and better at retaining insulating gas than many conventional spacers, and is nearly 25% more effective than a traditional box-shaped spacer at the edge of the glass unit.



The Optional Foam Spacer combines a structural foam spacer with a seal of hot melt butyl to create a "warm" non-conductive edge. This non-metal design eliminates any metal-to-glass contact, thereby increasing the edge of the glass temperature by more than 16° – resulting in 60% more energy efficiency than a traditional box metal spacer.



Increased energy savings with ClimaTech.

ClimaTech insulated glass packages have proven to be far more effective than ordinary clear glass units. The lower the U-Factor, the less energy you'll need to heat your home. The lower the Solar Heat Gain Coefficient (SHGC), the more you'll conserve on air-conditioning.



Fairfield 70 Series Glass Performance Comparison¹

| | Single-Hung | | Sliding | |
|-------------------------|-------------|------|----------|------|
| | U-Factor | SHGC | U-Factor | SHGC |
| ClimaTech LT | 0.35 | 0.33 | 0.35 | 0.33 |
| ClimaTech | 0.31 | 0.33 | 0.31 | 0.33 |
| ClimaTech iE | 0.30 | 0.33 | 0.30 | 0.33 |
| ClimaTech Elite | 0.30 | 0.22 | 0.30 | 0.22 |
| ClimaTech Plus | 0.29 | 0.33 | 0.29 | 0.33 |
| ClimaTech Plus Elite | 0.29 | 0.22 | 0.29 | 0.22 |
| Energy HSG ² | 0.33 | 0.56 | 0.33 | 0.56 |

Traditional Competitive Products

| | | | | |
|-----------------|------|------|------|------|
| Single Pane | 0.85 | 0.61 | 0.85 | 0.61 |
| Clear Insulated | 0.49 | 0.63 | 0.49 | 0.63 |

¹Whole window values / single-strength glass

²Whole window values / double-strength glass

Glass Package Terminology:

ClimaTech LT: Soft coat, multi-layer vacuum deposition Low-E glass and Intercept Spacer System.

ClimaTech: Soft coat, multi-layer, vacuum deposition Low-E glass, argon gas and Intercept Spacer System.

ClimaTech iE: Soft coat, multi-layer, vacuum deposition Low-E glass, argon gas and Intercept Spacer System. Carbonized foam liners in select frame channels.

ClimaTech Elite: Soft coat, SHGC multi-layer, vacuum deposition Low-E glass, argon gas and Intercept Spacer System.

ClimaTech Plus: Soft coat, multi-layer, vacuum deposition Low-E glass, argon gas and Foam Spacer System.

ClimaTech Plus Elite: Soft coat, SHGC multi-layer, vacuum deposition Low-E glass, argon gas and Foam Spacer System.

Energy HSG: High Solar Gain Low-E glass, argon gas and Intercept Spacer System.

Single Pane: Clear, single-pane unit.

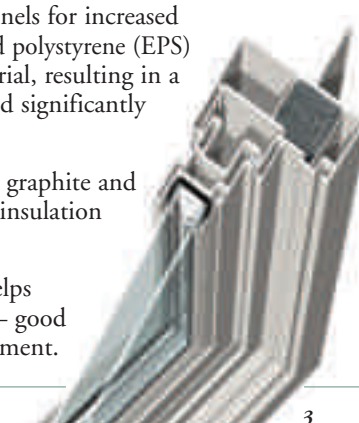
Clear Insulated: Clear double-pane insulated glass unit.

Raising the Standard with iE Technology

Next-generation innovations. ClimaTech iE features carbonized foam liners in select mainframe channels for increased energy efficiency. iE features expanded polystyrene (EPS) with graphite added to the raw material, resulting in a carbonized foam that reflects heat and significantly improves insulation performance.

Highly efficient material. Integrated graphite and foam cell structure provides optimal insulation capacity but uses less material.

Reduced energy consumption. iE helps lower heating and cooling demands – good for your fuel budget and the environment.



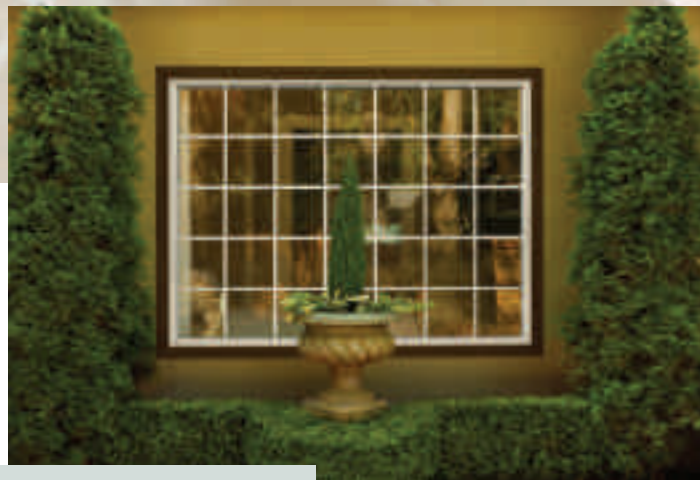
Picture and Fixed-Lite Windows / Specialty Shapes

*Transform
the appearance
of your home
with eye-catching
picture windows.*

*Fairfield 70 Series Picture
Windows inspire visual
appeal while maximizing
your outdoor viewing area.*

Picture windows invite the beauty of outdoors inside – without compromising the comfort and energy efficiency of your home. When you combine picture windows with fixed-lites or special shapes, you'll create a focal point that lends distinctive style to your home, both inside and out.

- Full 45-degree fusion-welded mainframe delivers increased strength and energy efficiency.
- Multi-chambered extrusions improve thermal performance and structural integrity.
- 1" integral pre-punched nail flange for enhanced installation and a weathertight fit.
- 1" thick insulated glass unit with warm-edge technology offers increased energy efficiency and noise reduction.
- Clean-line design creates a larger viewing area.
- Continuous frame on multiple unit configurations helps to enhance aesthetic appeal and thermal performance.

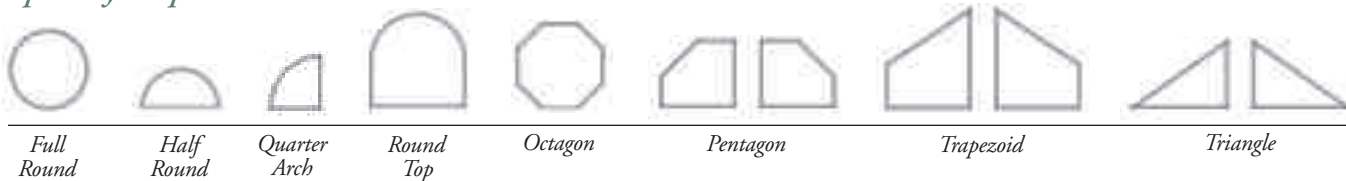


Model A770 Picture Window**

| | WIDTH | HEIGHT | U.I. |
|---------|-------|--------|------|
| MINIMUM | 8.5 | 8.5 | |
| MAXIMUM | 95.5 | 95.5 | 167 |

Unit Size is 1/2" smaller than Rough Opening

Specialty Shapes



Sliding Windows

Boasting a generous glass area, sliding windows let you enjoy an unobstructed outdoor view.



Smooth sliding action and full-view glass exposure make Fairfield 70 Series Sliding Windows a longtime favorite.

Sliding windows corner the market on easy operation, with a sash that glides horizontally to open and close. The moving sash also lifts out for convenient cleaning from inside your home.

- Full 45-degree fusion-welded mainframe and sashes deliver increased strength and energy efficiency.
- 1" integral pre-punched nail flange for enhanced installation and a weathertight fit.
- 3/4" thick insulated glass unit with warm-edge technology offers increased energy efficiency and noise reduction.

- Integral pull handle for ease of operation when opening and closing the window.
- Double-pile weatherstripping at the locking rail increases thermal performance.
- Adjustable tandem brass rollers in a non-corrosive housing ensures smooth operation.
- Sweep-style cam lock and keeper provides a tight seal and increased energy efficiency.



Optional self-locking Positive Action Lock (PAL) shown unlocked and locked. Window unit closes and automatically locks in one action.

Model A272 Sliding Window**

| | WIDTH | HEIGHT | U.I. |
|---------|-------|--------|------|
| MINIMUM | 20 | 14.5 | |
| or | | | |
| MINIMUM | 29.5 | 10 | |
| MAXIMUM | 71.5 | 71.5 | 143 |

Unit Size is 1/2" smaller than Rough Opening

Model A273 Sliding Window**

| | WIDTH | HEIGHT | U.I. |
|---------|-------|--------|------|
| MINIMUM | 47.5 | 14.5 | |
| or | | | |
| MINIMUM | 71.5 | 10 | |
| MAXIMUM | 119.5 | 71.5 | 191 |

Unit Size is 1/2" smaller than Rough Opening

This picture window above a two-lite sliding window in a continuous frame unit delivers clean lines and enhanced thermal performance.



Single-Hung Windows



Model A571 Single-Hung Window**

| | WIDTH | HEIGHT | U.I. |
|---------|-------|--------|------|
| MINIMUM | 14.5 | 23.5 | |
| or | | | |
| MINIMUM | 10 | 29.5 | |
| MAXIMUM | 47.5 | 95.5 | 143 |

Unit Size is 1/2" smaller than Rough Opening

Whatever your home's architectural style, Fairfield 70 Series Single-Hung Windows will convey impeccable quality and taste.

Single-hung windows offer the best of both worlds – classic beauty and modern practicality.



Built for everyday wear and tear, our single-hung windows feature a heavy-duty construction that will stand the test of time.

- Full 45-degree fusion-welded mainframe and sashes deliver increased strength and energy efficiency.
- Multi-chambered extrusions improve thermal performance and structural integrity.
- 1" integral pre-punched nail flange for enhanced installation and a weathertight fit.

- 3/4" thick insulated glass unit with warm-edge technology offers increased energy efficiency and noise reduction.
- Side load sash operates on two concealed, pre-calibrated sash balances.
- Integral lift handle for easy raising and lowering of the sash.
- Sweep-style cam lock and keeper provides a tight seal and increased energy efficiency.
- Sash perimeters are fully weatherstripped for improved thermal protection.



Optional self-locking Positive Action Lock (PAL) shown unlocked and locked. Window unit closes and automatically locks in one action.

Sliding Patio Doors

Handsome construction combines with a high-performance glass system, to deliver casual elegance and year-round comfort to your home.

A quality-crafted patio door is a simple luxury you'll appreciate every day, every season. Its smooth and reliable operation, along with a weathertight fit, provides a welcoming entry and lets the natural light shine through.



An integral full-length interlock provides increased strength and protection from energy loss.

- Fusion-welded construction delivers long-lasting strength and durability.
- Sturdy 4 1/2" frame depth and 1" wide integral nailing fin with 1 3/8" set back for added structural integrity.
- Stucco fin option is also available.
- 1" thick insulated glass with warm-edge technology.
- Adjustable dual tandem roller system on a stainless steel track ensures easy operation.
- Available in white, almond or desert clay; a bronze exterior with a white interior also is offered.
- Keyed handle lock and foot lock options.
- Two-, three- and four-panel configurations available.



Go Green

Exceptionally energy-smart and weathertight, Alside Windows and Patio Doors not only reduce fuel consumption needed to heat and cool homes, they also boast a long service life and achieve optimal material use and minimal waste in production. Virtually all in-plant vinyl scrap is recycled into other useful products, further reducing the environmental impact of waste. Vinyl windows and patio doors also are eco-friendly because vinyl resin is derived largely from common salt – a sustainable and abundant natural resource!³



USGBC and related logo is a trademark owned by the U.S. Green Building Council and is used by permission.

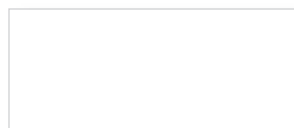
³Source: *A Clear View – Vinyl Windows and the Environment*. American Architectural Manufacturers Association (AAMA) & The Vinyl Institute (VI).



Decorative Options

Colors.

Fairfield 70 Series Windows are available in White, Almond and Desert Clay to complement a variety of exterior designs.



White



Almond



Desert Clay

Interior grids.

Decorative grids will lend style and dimension to your windows. Classic grids are available in White, Almond and Desert Clay. All grid selections are offered in Colonial, Prairie and Craftsman patterns in a $\frac{5}{8}$ " standard flat grid, a $\frac{3}{4}$ " contoured grid and a 1" contoured grid. Designer grids are also available to further customize the appearance of your windows.



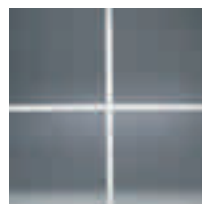
$\frac{5}{8}$ " Standard
Colonial



$\frac{5}{8}$ " Standard
Prairie



$\frac{5}{8}$ " Standard
Craftsman



$\frac{3}{4}$ " Contoured
Colonial



$\frac{3}{4}$ " Contoured
Prairie



$\frac{3}{4}$ " Contoured
Craftsman



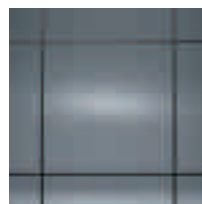
1" Contoured
Colonial



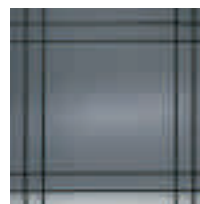
1" Contoured
Prairie



1" Contoured
Craftsman



$\frac{5}{16}$ " Designer
Prairie



$\frac{5}{16}$ " Designer
Double Prairie

The Alside Lifetime Limited Warranty.

Fairfield 70 Series Windows are made by Alside, a recognized leader in product innovation, manufacturing excellence and uncompromising quality control. That's a reputation you can count on, from the day your windows are installed until the day you sell your home. And to make your buying decision easier, Alside backs all Fairfield 70 Series Windows

with its Lifetime Limited Warranty*. . . one of the strongest in the industry.



Ask your Alside Sales Representative for more information about energy tax credits* and visit www.energystar.gov or www.dsireusa.org for details.



Alside PO Box 2010 Akron, Ohio 44309
1-800-922-6009 www.alside.com



©2016 Alside. Alside and ClimaTech are registered trademarks of AML. Intercept is a registered trademark of PPG Industries. ENERGY STAR name and logo are registered U.S. marks and are owned by the U.S. government. *It is always suggested to consult your tax planner and review all IRS guidelines. Alside nor its representatives shall act as a tax advisor. †Insulated Glass (IG) units that require capillary tubes may experience some argon gas depletion. **Multiple configurations also available. See your Alside Sales Representative for details. ‡A written copy of the warranty is available by writing to: Warranty Department, PO Box 2010 Akron, Ohio 44309. Colors are reproduced by lithographic process and may vary slightly from colors of actual product. All specifications and designs subject to change without notice. Printed in USA 7-16/7-5M/OP 75-2530-01